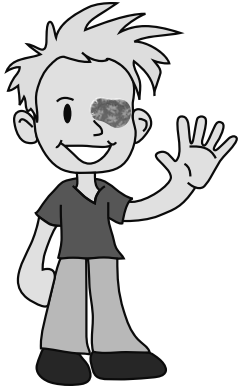
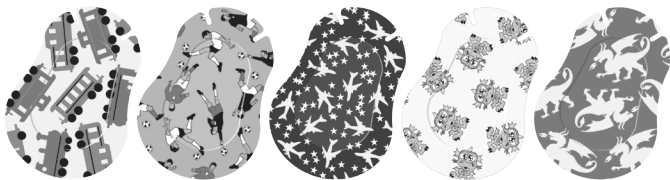
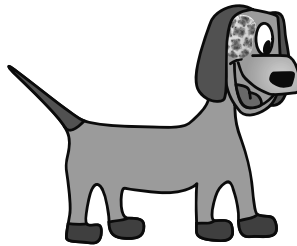
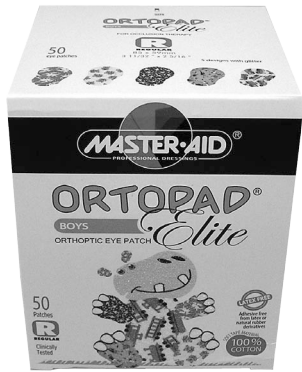


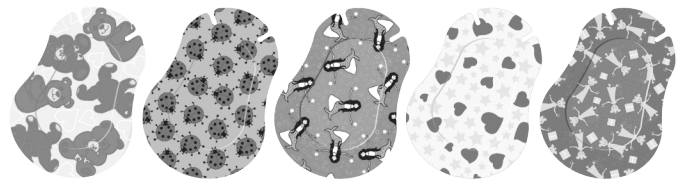
Introducing ORTOPAD[®] ORTHOPTIC EYE PATCH *Elite*



- Non-woven 100% cotton to minimize perspiration
- 2 nasal slits for a better fit close to the nose and under a child's eyeglasses
- Redesigned, larger shape with opaque material



Trains, Soccer, Planes/Stars, Aliens, Dragons



Teddy Bears, Ladybugs, Mermaids, Hearts/Stars, Princesses

- 5 new designs for girls and 5 new designs for boys, all with glitter accents
 - Reformulated adhesive for better adherence; latex-free and hypo-allergenic
- Inlay is thin and soft, providing optimal light shielding
 - 3 sizes to fit every face (junior, medium, regular)